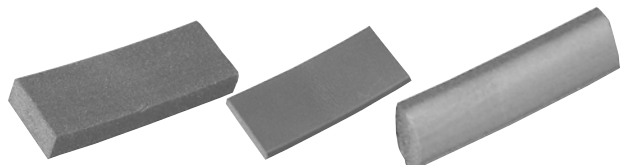


# Lead-Free Wheel Weight Solutions

## 3M™ LEAD FREE WHEEL WEIGHTS & ACCESSORIES

### 3M™ LEAD FREE WHEEL WEIGHTS



- Flexible roll design - easy to dispense, cut and apply
- Lead-free/ corrosion-free
- 3M™ Automotive attachment tape
- Zero waste
- Precise balance

Part No.	Description	Unit
61403	3M Wheel Weight High Profile, 12 lbs.	1
61405	3M Wheel Weight Low Profile, 20 lbs.	1
99427	3M Wheel Weight Flange Style, 10 lbs.	1
99473	LWF - Large Wheel Footprint, 20 lbs. For lightweight SUVs	1

### 3M™ CUTTING BLADES, ANVIL, STAND, DUAL BOX HOLDER



Part No.	Description	Unit
61592	3 Blades & 1 Anvil	1
61480	Cutting Stand	1
99428	Dual Box Holder	1

### 3M™ WHEEL WEIGHT DUAL CUTTER BRACKET

- For use with the 3M™ cutting stand
- Hold two cutters
- Eliminates the need to change weight sizes prior to cutting



Part No.	Description	Unit
99429	Dual Cutter Bracket	1

### 3M™ WHEEL WEIGHT UNIVERSAL CUTTING TOOL

- Offers precision cutting of the 3M™ lead free wheel weights
- Cuts to the desired length and weight
- Cuts all three sizes of weight



Part No.	Description	Unit
61479	Universal Cutting Tool	1

### 3M™ WHEEL WEIGHT ACCESSORIES



Part No.	Description	Unit
99099	Wheel Weight Removal Tool, Plastic	1
99431	Replacement Ruler	1

## STEEL QUIKSTIK® WHEEL WEIGHTS & ACCESSORIES

### STEEL QUIKSTIK® ADHESIVE WEIGHTS

- Low environmental impact; non-toxic
- Easy-to-peel QuikTab® feature
- Wheel protectors® coating - protects wheel from discoloration and rust
- Unique trapezoid design - allows easy contouring to any wheel without bridging
- No measuring - pre-segmented for quick weight selection
- No cutting - easy to tear paper backing
- No waste - dispense only what you need
- Proven adhesive - stick fast and holds longer

### STEEL QUIKSTIK® LOW PROFILE ADHESIVE WHEEL WEIGHTS

- 16.5 lb. roll
- 1,500 5 gram increments



Part No.	Description	Unit
A100153	Low Profile	1

## STEEL QUIKSTIK® WHEEL WEIGHTS & ACCESSORIES

### STEEL QUIKSTIK® STANDARD PROFILE ADHESIVE WHEEL WEIGHTS



Part No.	Description	Unit
A100152	20 lb roll, 1,280 1/4 oz. increments	1
A100211	4.9 lb box, 0.25 oz. increments	1

### STEEL QUIKSTIK® STANDARD PROFILE HEAVY-DUTY TRUCK ADHESIVE WHEEL WEIGHTS



- Increment width: 1"
- Increments come in pre-cut strips of 6 ounces
- 30 pcs/box

Part No.	Description	Unit
A100210	11 lb box, 0.5 oz increments, (7 grams)	1

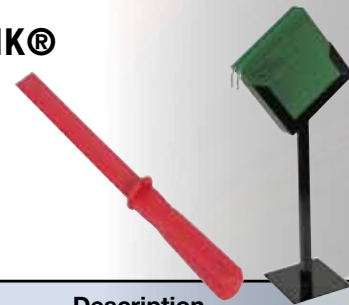
### STEEL QUIKSTIK® STARTER KIT

- Kit includes: QuikStik® stand, 5 lb. sample rolls of the standard & low profile weights, adhesive removal tool



Part No.	Description	Unit
SK3000	Starter Kit	1

### STEEL QUIKSTIK® ACCESSORIES



Part No.	Description	Unit
PERQS3000	Wheel Weight Stand, holds 2 boxes	1
PERQSS1	QuikStik® Removal Tool	1

## ZINC WHEEL WEIGHTS

### LEAD FREE "P" SERIES Coated



- Used on all standard passenger car 13"-15" steel or alloy wheels

Part No.	Weight (oz.)	Unit
A100058	1/4	25
A100059	1/2	25
A100060	3/4	25
A100061	1	25
A100062	1-1/4	25
A100063	1-1/2	25
A100064	1-3/4	25
A100065	2	25
A100066	2-1/4	25
A100067	2-1/2	25
A100068	2-3/4	25
A100069	3	25

### LEAD FREE "T" SERIES Coated



- Used on most domestic light-duty trucks with decorative and larger thickness steel wheels
- Also used on most late-model light-duty trucks with alloy wheels

Part No.	Weight (oz.)	Unit
A100070	1/4	25
A100071	1/2	25
A100072	3/4	25
A100073	1	25
A100074	1-1/4	25
A100075	1-1/2	25
A100076	1-3/4	25
A100077	2	25
A100078	2-1/4	25
A100079	2-1/2	25
A100080	2-3/4	25
A100081	3	25

## ZINC WHEEL WEIGHTS

### LEAD FREE "MC" SERIES Coated

- Used on most domestic vehicles with alloy rims



Part No.	Weight (oz.)	Unit
A100082	1/4	25
A100083	1/2	25
A100084	3/4	25
A100085	1	25
A100086	1-1/4	25
A100087	1-1/2	25
A100088	1-3/4	25
A100089	2	25
A100090	2-1/4	25
A100091	2-1/2	25
A100092	2-3/4	25
A100093	3	25

### LEAD FREE "EN" SERIES Coated

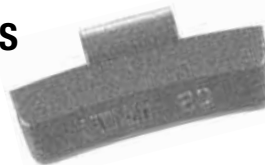
- Used on Audi, Mercedes Benz and early model Japanese vehicles with alloy wheels



Part No.	Weight (grams)	Unit
A100117	10	25
A100118	15	25
A100119	20	25
A100120	25	25
A100121	30	25
A100122	35	25
A100123	40	25
A100124	45	25
A100125	50	25
A100126	55	25
A100127	60	25

### LEAD FREE "IAW" SERIES Coated

- Used on most European and certain Asian vehicles with alloy wheels



Part No.	Weight (grams)	Unit
A100094	10	25
A100095	15	25
A100096	20	25
A100097	25	25
A100098	30	25
A100099	35	25
A100100	40	25
A100101	45	25
A100102	50	25
A100103	55	25
A100104	60	25

### LEAD FREE "LT1" SERIES Coated Truck Weight

- Used on light-duty, 3/4 an 1-ton vehicles with tube or tubeless rims
- Also used on heavier trucks with thin rim flanges



Part No.	Weight (oz.)	Unit
A100128	1/2	25
A100129	1	25
A100130	1-1/2	25
A100131	2	25
A100132	2-1/2	25
A100133	3	25
A100134	3-1/2	25
A100135	4	25
A100136	4-1/2	25
A100137	5	25

### LEAD FREE "FN" SERIES Coated

- Used on most Japanese vehicles with alloy wheels since 1990



Part No.	Weight (grams)	Unit
A100105	5	25
A100106	10	25
A100107	15	25
A100108	20	25
A100109	25	25
A100110	30	25
A100111	35	25
A100112	40	25
A100113	45	25
A100114	50	25
A100115	55	25
A100116	60	25

### LEAD FREE "I7" SERIES Coated Truck Weight

- The most popular weight for medium and heavy duty trucks
- Used on the majority of trucks with tube type tires



Part No.	Weight (oz.)	Unit
A100138	1	25
A100139	1-1/2	25
A100140	2	25
A100141	2-1/2	25
A100142	3	25
A100143	3-1/2	25
A100144	4	25
A100145	5	25

## ZINC WHEEL WEIGHTS

### LEAD FREE "TAL" SERIES Coated Truck Weight



- Used on Alcoa and Accuride aluminum tubeless heavy-duty truck wheels
- Will fit both sides of the wheel

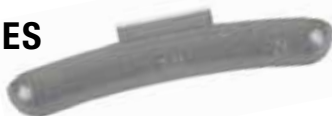
Part No.	Weight (oz.)	Unit
A100146	1	25
A100147	2	25
A100148	3	25
A100149	4	25
A100150	5	25
A100151	6	25

### LEAD FREE "CUZ" SERIES Coated

- Used for Mercedes Benz, VW/Audi and Porsche

Part No.	Weight (grams)	Unit
A100192	5	25
A100193	10	25
A100194	15	25
A100195	20	25
A100196	25	25
A100197	30	25
A100198	35	25
A100199	40	25

### LEAD FREE "LH" SERIES Coated Truck Weight



- Used on late model Chrysler cars
- Designed to fit the unique wheel profile

Part No.	Weight (oz.)	Unit
A100154	1/4	25
A100155	1/2	25
A100156	3/4	25
A100157	1	25
A100158	1-1/4	25
A100159	1-1/2	25
A100160	1-3/4	25
A100161	2	25
A100162	2-1/4	25
A100163	2-1/2	25
A100164	2-3/4	25
A100165	3	25

### LEAD FREE "BMZ" SERIES Coated

- Special safety wheel weight for all BMW models as well as for steel and aluminum alloy wheels

Part No.	Weight (grams)	Unit
A100216	5	25
A100217	10	25
A100218	15	25
A100219	20	25
A100220	25	25
A100221	30	25
A100222	35	25
A100223	40	25
A100224	45	25
A100225	50	25

### LEAD FREE "AW" SERIES Coated



- Used on most domestic vehicles with alloy rims prior to 1995

Part No.	Weight (oz.)	Unit
A100180	1/4	25
A100181	1/2	25
A100182	3/4	25
A100183	1	25
A100184	1-1/4	25
A100185	1-1/2	25
A100186	1-3/4	25
A100187	2	25
A100188	2-1/4	25
A100189	2-1/2	25
A100190	2-3/4	25
A100191	3	25

### LEAD FREE "MBZ" SERIES Coated

- Special safety wheel weight for all Mercedes Benz models as well as for steel and aluminum alloy wheels

Part No.	Weight (grams)	Unit
A100228	5	25
A100229	10	25
A100230	15	25
A100231	20	25
A100232	25	25
A100233	30	25
A100234	35	25
A100235	40	25
A100236	45	25
A100237	50	25

## STEEL WHEEL WEIGHTS



### STEEL "AW" SERIES

#### Coated

- Used on most domestic vehicles with alloy rims prior to 1995

Part No.	Weight (oz.)	Unit
A100320	1/4	25
A100321	1/2	25
A100322	3/4	25
A100323	1	25
A100324	1-1/4	25
A100325	1-1/2	25
A100326	1-3/4	25
A100327	2	25
A100328	2-1/4	25
A100329	2-1/2	25

### STEEL "EN" SERIES

#### Coated

- Used on Audi, Mercedes Benz and early-model Japanese vehicles with alloy wheels

Part No.	Weight (grams)	Unit
A100372	10	25
A100373	15	25
A100374	20	25
A100375	25	25
A100376	30	25
A100377	35	25
A100378	40	25
A100379	45	25
A100380	50	25
A100381	55	25
A100382	60	25

### STEEL "LH" SERIES

#### Coated

- Used on late-model Chrysler cars and is designed to fit the unique wheel profile

Part No.	Weight (oz.)	Unit
A100340	1/4	25
A100341	1/2	25
A100342	3/4	25
A100343	1	25
A100344	1-1/4	25
A100345	1-1/2	25
A100346	1-3/4	25
A100347	2	25
A100348	2-1/4	25
A100349	2-1/2	25

### STEEL "FN" SERIES

#### Coated

- Used on most Japanese vehicles with alloy wheels since 1990

Part No.	Weight (grams)	Unit
A100361	10	25
A100362	15	25
A100363	20	25
A100364	25	25
A100365	30	25
A100366	35	25
A100367	40	25
A100368	45	25
A100369	50	25
A100370	55	25
A100371	60	25

### STEEL "IAW" SERIES

#### Coated

- Used on most European and certain Asian vehicles with alloy wheels

Part No.	Weight (grams)	Unit
A100350	10	25
A100351	15	25
A100352	20	25
A100353	25	25
A100354	30	25
A100355	35	25
A100356	40	25
A100357	45	25
A100358	50	25
A100359	55	25
A100360	60	25

### STEEL "P" SERIES

#### Coated

- For use on standard passenger car 13" - 17" steel wheels

Part No.	Weight (oz.)	Unit
A100300	1/4	25
A100301	1/2	25
A100302	3/4	25
A100303	1	25
A100304	1-1/4	25
A100305	1-1/2	25
A100306	1-3/4	25
A100307	2	25
A100308	2-1/4	25
A100309	2-1/2	25

## STEEL WHEEL WEIGHTS

### STEEL "MC" SERIES

#### Coated

- Used on most domestic vehicles with alloy rims

Part No.	Weight (oz.)	Unit
A100330	1/4	25
A100331	1/2	25
A100332	3/4	25
A100333	1	25
A100334	1-1/4	25
A100335	1-1/2	25
A100336	1-3/4	25
A100337	2	25
A100338	2-1/4	25
A100339	2-1/2	25

**\*\*\*SPECIAL STEEL WHEEL WEIGHT TOOL RECOMMENDED FOR USE WITH THIS OFFERING**

### STEEL "T" SERIES

#### Coated

- Used on most domestic light trucks with decorative and larger thickness steel wheels and most late model light trucks with alloy wheels

Part No.	Weight (oz.)	Unit
A100310	1/4	25
A100311	1/2	25
A100312	3/4	25
A100313	1	25
A100314	1-1/4	25
A100315	1-1/2	25
A100316	1-3/4	25
A100317	2	25
A100318	2-1/4	25
A100319	2-1/2	25

## WHEEL WEIGHT INSTALLATION TOOLS

### METAL TIPPED INSTALLATION TOOL



- For use with passenger car wheel weight installation
- Industry standard tool
- Plastic coated handles provide a better grip
- Not recommended for use with coated wheel weights

Part No.	Description	Unit
21200	Installation Tool	1

### PLASTIC TIPPED INSTALLATION TOOL



- For use with passenger car wheel weight installation
- Hammer features a unique soft head acetate hammer face
- Wooden handle and cast head have an enamel finish
- Rear mounted hardened steel "Clip Claw" quickly removes old weights
- Recommended for use with coated wheel weights

Part No.	Description	Unit
21209	Installation Tool	1

### LARGE TRUCK WEIGHT INSTALLATION TOOL



- Primarily used for large truck steel wheel weights
- "Clip Claw" quickly removes old weights
- Extra-heavy hammer simplifies installation of large weights
- Plastic-coated handles provide a better grip and a comfortable feel

Part No.	Description	Unit
21206	Installation Tool	1

## LEAD-FREE CLIP-ON STYLE WHEEL WEIGHT ASSORTMENTS

Part No.	Assortment Description	# Items	# Pcs.	Bin Part No.	Bin Description
59950B	LEAD-FREE "AW" SERIES WW ASSORTMENT	12	300	80741	Medium-Hole 18 Hole Storage Cabinet
59970B	LEAD-FREE "AW" SERIES WW ASSORTMENT	12	300	80702	Metal Drawer Service Cabinet, w/18 drawers
59951B	LEAD-FREE "CUZ" SERIES WW ASSORTMENT	8	200	80741	Medium-Hole 18 Hole Storage Cabinet
59971B	LEAD-FREE "CUZ" SERIES WW ASSORTMENT	8	200	80702	Metal Drawer Service Cabinet, w/18 drawers
59952B	LEAD-FREE "EN" SERIES WW ASSORTMENT	11	275	80741	Medium-Hole 18 Hole Storage Cabinet
59972B	LEAD-FREE "EN" SERIES WW ASSORTMENT	11	275	80702	Metal Drawer Service Cabinet, w/18 drawers
59953B	LEAD-FREE "FN" SERIES WW ASSORTMENT	12	300	80741	Medium-Hole 18 Hole Storage Cabinet
59973B	LEAD-FREE "FN" SERIES WW ASSORTMENT	12	300	80702	Metal Drawer Service Cabinet, w/18 drawers
59954B	LEAD-FREE "I7" SERIES WW ASSORTMENT	8	200	80741	Medium-Hole 18 Hole Storage Cabinet
59974B	LEAD-FREE "I7" SERIES WW ASSORTMENT	8	200	80702	Metal Drawer Service Cabinet, w/18 drawers
59955B	LEAD-FREE "IAW" SERIES WW ASSORTMENT	11	275	80741	Medium-Hole 18 Hole Storage Cabinet
59975B	LEAD-FREE "IAW" SERIES WW ASSORTMENT	11	275	80702	Metal Drawer Service Cabinet, w/18 drawers
59956B	LEAD-FREE "LH" SERIES WW ASSORTMENT	12	300	80741	Medium-Hole 18 Hole Storage Cabinet
59976B	LEAD-FREE "LH" SERIES WW ASSORTMENT	12	300	80702	Metal Drawer Service Cabinet, w/18 drawers
59957B	LEAD-FREE "LT1" SERIES WW ASSORTMENT	10	250	80741	Medium-Hole 18 Hole Storage Cabinet
59977B	LEAD-FREE "LT1" SERIES WW ASSORTMENT	10	250	80702	Metal Drawer Service Cabinet, w/18 drawers
59958B	LEAD-FREE "BMZ" SERIES WW ASSORTMENT	10	250	80741	Medium-Hole 18 Hole Storage Cabinet
59978B	LEAD-FREE "BMZ" SERIES WW ASSORTMENT	10	250	80702	Metal Drawer Service Cabinet, w/18 drawers
59959B	LEAD-FREE "MBZ" SERIES WW ASSORTMENT	10	250	80741	Medium-Hole 18 Hole Storage Cabinet
59979B	LEAD-FREE "MBZ" SERIES WW ASSORTMENT	10	250	80702	Metal Drawer Service Cabinet, w/18 drawers
59960B	LEAD-FREE "MC" SERIES WW ASSORTMENT	12	300	80741	Medium-Hole 18 Hole Storage Cabinet
59980B	LEAD-FREE "MC" SERIES WW ASSORTMENT	12	300	80702	Metal Drawer Service Cabinet, w/18 drawers
59961B	LEAD-FREE "P" SERIES WW ASSORTMENT	12	300	80741	Medium-Hole 18 Hole Storage Cabinet
59981B	LEAD-FREE "P" SERIES WW ASSORTMENT	12	300	80702	Metal Drawer Service Cabinet, w/18 drawers
59962B	LEAD-FREE "T" SERIES WW ASSORTMENT	12	300	80741	Medium-Hole 18 Hole Storage Cabinet
59982B	LEAD-FREE "T" SERIES WW ASSORTMENT	12	300	80702	Metal Drawer Service Cabinet, w/18 drawers
59963B	LEAD-FREE "TAL" SERIES WW ASSORTMENT	6	150	C29404B	Metal Drawer Service Cabinet, w/6 drawers
59940B	"P" SERIES STEEL VALUE WW ASSORTMENT	10	250	80741	Medium-Hole 18 Hole Storage Cabinet
59941B	"T" SERIES STEEL VALUE WW ASSORTMENT	10	250	80741	Medium-Hole 18 Hole Storage Cabinet
59942B	"AW" SERIES STEEL VALUE WW ASSORTMENT	10	250	80741	Medium-Hole 18 Hole Storage Cabinet
59943B	"MC" SERIES STEEL VALUE WW ASSORTMENT	10	250	80741	Medium-Hole 18 Hole Storage Cabinet
59944B	"LH" SERIES STEEL VALUE WW ASSORTMENT	10	250	80741	Medium-Hole 18 Hole Storage Cabinet
59945B	"IAW" SERIES STEEL VALUE WW ASSORTMENT	11	275	80741	Medium-Hole 18 Hole Storage Cabinet
59946B	"FN" SERIES STEEL VALUE WW ASSORTMENT	11	275	80741	Medium-Hole 18 Hole Storage Cabinet
59947B	"EN" SERIES STEEL VALUE WW ASSORTMENT	11	275	80741	Medium-Hole 18 Hole Storage Cabinet

## WHEEL WEIGHT ASSORTMENT BINS & DRAWERS, MISC.

### 18 HOLE STORAGE BIN



- 35-1/4" wide x 21" high x 12-1/2" deep
- Hole dimension: 6-1/4" wide x 5-1/4" high
- Steel construction
- Use with 80700 universal legs or 80760 base stand
- Ideal for large fasteners and hydraulic fittings

Part No.	Description	Unit
80741	Medium-18-Hole Storage Bin	1

### 18 DRAWER CABINET



- Eighteen drawers with 54 dividers
- Dimensions: 35-1/4" W x 10-1/2" H x 11-5/8" D
- Steel construction
- Use with 80760 base stand

Part No.	Description	Unit
80702	Metal Drawer Service Cabinet	1

### 6 DRAWER CABINET



- Drawer Size: 5-3/8" W x 2-3/4" H x 11-1/4" D
- Cabinet Size: 35-1/4" W x 4" H x 11-5/8" D
- Use with 80760 base stand

Part No.	Description	Unit
C29404B	6 Drawer Cabinet, Blue	1

## WHEEL WEIGHT APPLICATION GUIDE WALL CHART

Vehicle Model	2001	2002	2003	2004	2005	2006	2007	2008	2009	2010	2011
<b>ACURA</b>											
<i>JD</i>	FWB	FWB	FWB	FWB	FWB	FWB	FWB	FWB	FWB	FWB	FWB
<b>ACURA</b>											
<i>JD</i>	EN	EN	EN	EN	EN	EN	EN	EN	EN	EN	EN
<b>BMW</b>											
<i>JD</i>	IAWB	IAWB	IAWB	IAWB	IAWB	IAWB	IAWB	IAWB	IAWB	IAWB	IAWB
<b>BUICK</b>											
<i>JD</i>	MCN	MCN	MCN	MCN	MCN	MCN	MCN	MCN	MCN	MCN	MCN
<b>CADILLAC</b>											
<i>Camaro</i>	IAW										
<i>CTS</i>											
<i>Devils</i>	MCN	MCN	MCN	MCN	MCN	MCN	MCN	MCN	MCN	MCN	MCN
<i>Elmiras</i>	MCN	MCN									
<i>Devils</i>	MCN	MCN	MCN	MCN	MCN	MCN	MCN	MCN	MCN	MCN	MCN
<i>XLR</i>	QuikStk	QuikStk	QuikStk	QuikStk	QuikStk	QuikStk	QuikStk	QuikStk	QuikStk	QuikStk	QuikStk
<b>CHEVROLET</b>											
<i>Aveo</i>											
<i>Camaro</i>	MCN	MCN								MCN	MCN
<i>Cavalier</i>	MCN	MCN	MCN	MCN	MCN						
<i>Cobalt</i>											
<i>Corvette</i>	AWB	AWB	AWB	AWB	QuikStk	QuikStk	QuikStk	QuikStk	QuikStk	QuikStk	QuikStk
<i>Impala</i>	MCN	MCN	MCN	MCN	MCN	MCN	MCN	MCN	MCN	MCN	MCN
<i>Lumina APV / Venture APV</i>	MCN										
<i>Lumina Sedan</i>	MCN										
<i>Malibu</i>	MCN	MCN	MCN	MCN	MCN	MCN	MCN	MCN	MCN	MCN	MCN
<i>Malibu Maxx</i>	FN										
<i>Monte Carlo</i>	MCN	MCN	MCN	MCN	MCN	MCN					
<i>Pontiac</i>	FN	FN	FN								
<i>SBR</i>			MCN	MCN	MCN	MCN					
<i>Uplander</i>					MCN	MCN	MCN	MCN	MCN	MCN	

### WHEEL WEIGHT GAUGE



Part No.	Description	Unit
K-1247	Wheel Weight Gauge	1

Part No.	Description	Unit
K-1248	Application Guide Wall Chart	1